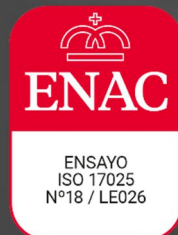


TEST REPORT IN-00005/2023-1

INDETEX NV
Rue du Mont-Gallois, 58
B-7700 – Mouscron
Belgium

Date of issue: February 02nd, 2023



The activities marked with (*) are not included in the ENAC accreditation.

LEITAT
Acondicionamiento Tarrasense
Tel. (+34) 93 788 23 00
Fax. (+34) 93 789 19 06

www.leitat.org
leitat@leitat.org

C/ De la Innovació, 2
08225 Terrassa (Barcelona)

TEST REPORT

Report number: IN-00005/2023-1

Total pages: 9

SAMPLE RECEIVED

Information provided by the applicant:

Description: Paloma/Pegaso/Pesci/Porto
Reference: Paloma/Pegaso/Pesci/Porto

Internal description and identification:

Description: Fabric
Reference: M-00005/23



Date of entry: January 02nd, 2023

REQUESTED TESTS

- TEXTILES. DOMESTIC WASHING AND DRYING PROCEDURES FOR TEXTILE TESTING
EN ISO 6330:2012
- TEXTILES AND TEXTILE PRODUCTS. BURNING BEHAVIOUR. CURTAINS AND DRAPES.
DETAILED PROCEDURE TO DETERMINE THE IGNIABILITY OF VERTICALLY ORIENTED SPECIMENS
(SMALL FLAME)
EN 1101:1995/A1:2005
- TEXTILES AND TEXTILE PRODUCTS. BURNING BEHAVIOUR. CURTAINS AND DRAPES.
MEASUREMENT OF FLAME SPREAD OF VERTICALLY ORIENTED SPECIMENS WITH LARGE
IGNITION SOURCE
EN 13772:2011
- TEXTILES AND TEXTILE PRODUCTS. FIRE BEHAVIOUR. CURTAINS AND DRAPERIES.
CLASSIFICATION SCHEME
EN 13773:2003



TEXTILES. DOMESTIC WASHING AND DRYING PROCEDURES FOR TEXTILE TESTING

Test standard:	EN ISO 6330:2021
According to:	Not applicable
Date of completion:	January 10 th to 20 th , 2023

Test equipment:
Washing machine, WASCATOR FOM 71 MP-Lab, no. EQ516
Balance, SARTORIUS, no. EQ116

Test conditions:
Conditioning of the specimens: ≥ 24 hours at (20 ± 2) °C and (65 ± 4) % RH
Internal identification: M-00005/23
Washing procedure: <ul style="list-style-type: none">• Procedure No: 3N• Temperature: 30°C• Detergent distribution and mixing:<ul style="list-style-type: none">- Detergent base powder (ECE 98) without optical brightener (77 parts)- Sodium perborate tetrahydrate (20 parts)- Bleach activator (tetra-acetylene diamine) (3 parts)• Type of load: Panels composed of four thicknesses of 100% textured polyester knitted fabric, with a mass per unit area of (310 ± 20) g/m², and dimensions of (20 ± 4) cm x (20 ± 4) cm
Drying procedure: A (Air drying) (each cycle)
Number of cycles of washing and drying procedure: 1 and 12



**TEXTILES AND TEXTILE PRODUCTS. BURNING BEHAVIOUR.
COURTAINS AND DRAPES. DETAILED PROCEDURE TO
DETERMINE THE IGNIABILITY OF VERTICALLY ORIENTED
SPECIMENS (SMALL FLAME)**

Test standard:	EN 1101:1995/A1:2005
According to:	Not applicable
Date of completion:	January 13 th – 16 th , 2022

Test equipment:
Vertical flammability test equipment, JBA, no. EQ299
Chronometer, IHM, no. EQ2140
Anemometer, TESTO, no. EQ3425

Test conditions:
Conditioning of specimens: ≥ 24 hours at $20^{\circ}\text{C} \pm 2^{\circ}\text{C}$ and $65\% \text{ RH} \pm 5\% \text{ RH}$
Test atmosphere: $24,0^{\circ}\text{C} / 40,3\% \text{ RH}$
Internal identification of specimens: M-00005/23
Type of test: According to the applicant's request <ul style="list-style-type: none">• After washing: EN ISO 6330:2012, 1 cycle, 30°C, drying procedure – A (after conditioning)
Number of specimens (according to UNE-EN ISO 6940:2004): 24 (12 lengthwise, 12 widthwise)
Dimensions of the specimens: $200 \text{ mm} \pm 2 \text{ mm} \times 80 \text{ mm} \pm 2 \text{ mm}$
Anisotropic material: No
Flame height: $40 \text{ mm} \pm 2 \text{ mm}$
Test equipment setting (according to UNE-EN ISO 6940:2004): Procedure B – Ignition from the bottom edge (burner tilted 30°)
Air speed: $< 0,2 \text{ m/s}$
Tested area: Bottom edge
Type of gas: Propane, commercial grade

Results:

Preliminary test, according to EN 1101:1996/A1:2005, section 7			
Lengthwise / Warp		Widthwise / Weft	
Flame application time (s)	Results	Flame application time (s)	Results
1	O	1	O
2	O	2	O
3	O	3	O
4	O	4	O
5	O	5	O
10	O	10	O
15	O	15	O
20	O	20	O

X: Ignition / O: Non-ignition

Test according to EN ISO 6940:2004, section 11				
Specimen no.	Lengthwise / Warp		Widthwise / Weft	
	Flame application time (s)	Results	Flame application time (s)	Results
#1	20	O	20	O
#2	20	O	20	O
#3	20	O	20	O
#4	20	O	20	O
#5	20	O	20	O

X: Ignition / O: Non-ignition

Mean ignition time, according to EN ISO 6940 - Annex B.2				
Flame application time (s)	Lengthwise / Warp		Widthwise / Weft	
	Number of ignition cases	Number of cases of non-ignition	Number of ignition cases	Number of cases of non-ignition
1	0	1	0	1
2	0	1	0	1
3	0	1	0	1
4	0	1	0	1
5	0	1	0	1
10	0	1	0	1
15	0	1	0	1
20	0	5	0	5
Comments	---		----	

	Lengthwise / Warp	Widthwise / Weft
Mean ignition time (s)	≥ 20	≥ 20
Minimum ignition time (s)	≥ 20	
Ignition of the specimen within 20 s	No	No

Picture after testing:





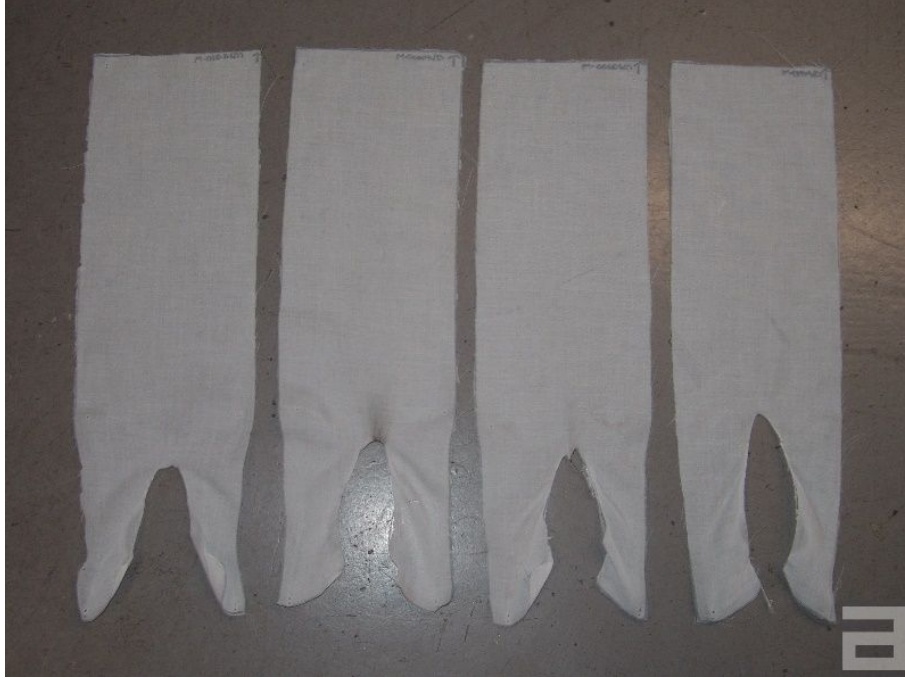
**TEXTILES AND TEXTILE PRODUCTS. BURNING BEHAVIOUR.
CURTAINS AND DRAPES. MEASUREMENT OF FLAME
SPREAD OF VERTICALLY ORIENTED SPECIMENS WITH
LARGE IGNITION SOURCE**

Test standard:	EN 13772:2011
According to:	Not applicable
Date of completion:	January 23 rd – 31 st , 2023

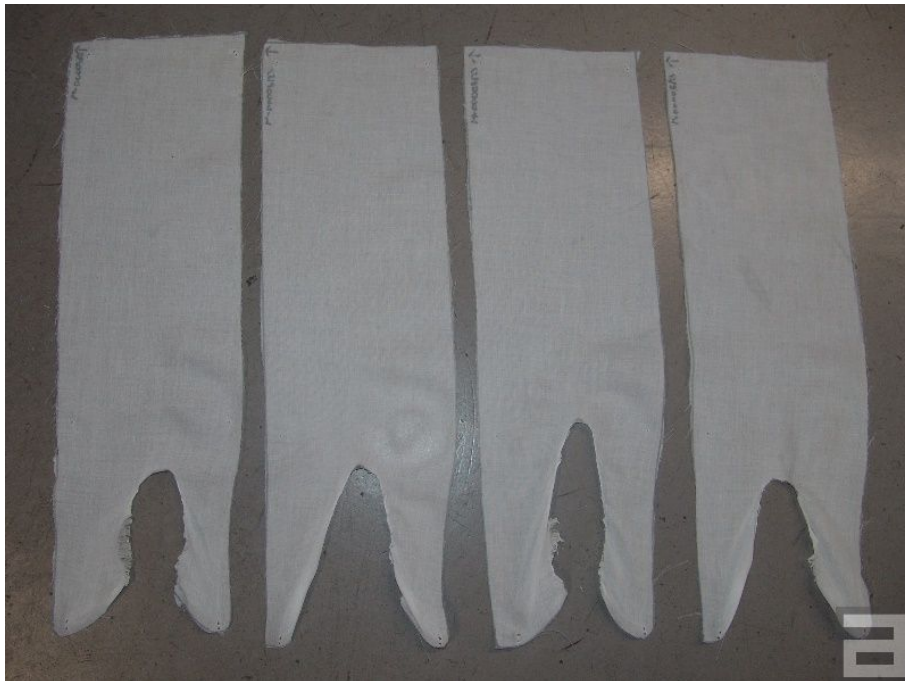
Test equipment:
Vertical flammability test equipment, JBA, no. EQ299
Chronometer, IHM, no. EQ2140
Anemometer, TESTO, no. EQ3425
Milimeter ruler, no. EQ285

Test conditions:
Conditioning of specimens: ≥ 24 hours at $(20 \pm 2)^{\circ}\text{C}$ and $(65 \pm 5)\%$ RH
Test atmosphere: $22,8^{\circ}\text{C}$ / $37,4\%$ RH
Internal identification of specimens: M-00005/23
Type of test: According to the applicant's request <ul style="list-style-type: none">• In-as received conditions (after conditioning)• After washing: EN ISO 6330:2012, 12 cycles, 30°C, drying procedure – A (after conditioning)
Sampling (according to EN 13772:2011): <ul style="list-style-type: none">• Number of specimens: 8 (4 lengthwise, 4 widthwise)• Dimensions of the specimens: $560 \text{ mm} \pm 2 \text{ mm} \times 170 \text{ mm} \pm 2 \text{ mm}$
Material with different sides: No
Reference material used: <ul style="list-style-type: none">• Standard cotton fabric (internal ref.MR006)• Standard cotton marker thread (internal ref.MR007)• Standard paper filter (internal ref.MR008)
Temperature increase ratio between 40°C and 100°C : $(3,0 \pm 1)^{\circ}\text{C/s}$
Flame height: $40 \text{ mm} \pm 2 \text{ mm}$
Air speed: $< 0,2 \text{ m/s}$
Tested area: Bottom edge
Type of gas: Propane, commercial grade

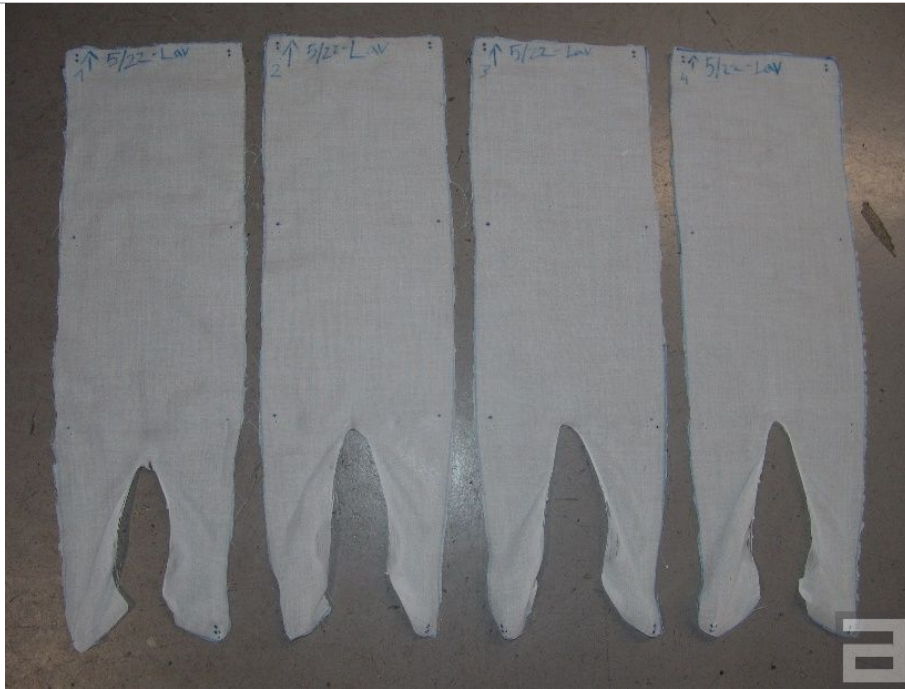
Pictures after testing:



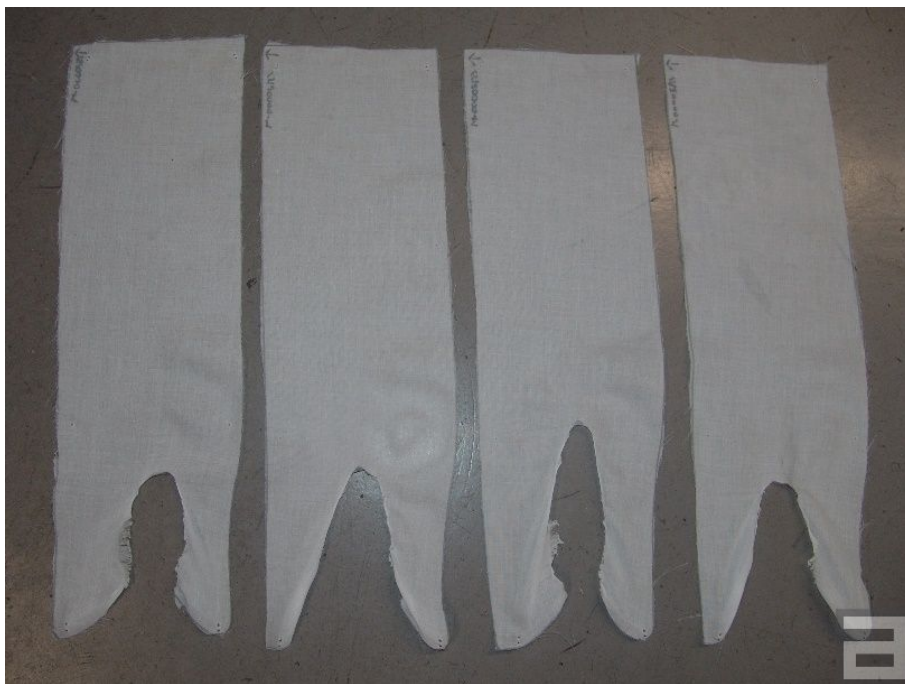
As-received conditions. Direction: Lengthwise / Warp



As-received conditions. Direction: Widthwise / Weft



After washing. Direction: Lengthwise / Warp



After washing. Direction: Widthwise / Weft



TEXTILES AND TEXTILE PRODUCTS. FIRE BEHAVIOUR. CURTAINS AND DRAPERIES. CLASSIFICATION SCHEME

Test standard:	EN 13773:2003
According to:	Not applicable
Date of completion:	January 13 th – 31 st , 2023



Classification criteria, according to EN 13773:2003, section 5, table 1

Class	Flammability	Flame spread
1	Non-ignition according to standard EN 1101:1995/A1:2005	First marking thread unaffected, without traces of flame action, according to the standard EN 13772:2011
2	Non-ignition according to standard EN 1101:1995/A1:2005	Third marking thread unaffected, without traces of flame action, according to the standard EN 13772:2011
3	Non-ignition according to standard EN 1101:1995/A1:2005	Third marking thread affected, and/or traces of flame action, according to standard EN 13772:2011
4	Ignition according to standard EN 1101:1995/A1:2005	Unaffected third marking thread without traces of flame action, according to standard EN 1102:2016
5	Ignition according to standard EN 1101:1995/A1:2005	Affected third marking thread and/or traces of flame action, according to standard EN 1102:1996

CLASSIFICATION

CLASS 1

SIGNATURE OF AUTHORISED PERSONNEL

	
Advanced Technology Services Technical Manager - Materials Area	Advanced Technology Services Head of Department
Albert Briz	Jordi Jamilena

ANNEX - LIABILITY CLAUSES

- a. This Laboratory is in no way responsible for the information included in the report that has been provided by the applicant.
- b. This document only attests to the results obtained from the samples submitted by the applicant for testing or analysis in this Laboratory, following the methods and conditions expressed in the report itself, and limiting the professional and legal liability of the Laboratory to these facts.
- c. For reports issued in digital format, the printout of such file shall be considered a copy. Only if specifically requested by the client, the Laboratory may provide an authenticated copy, by handwritten or notarised electronic signature. Reports issued in paper format, with handwritten signatures, shall be considered originals. Similarly, authenticated copies can only be provided by the Laboratory at the express request of the client.
- d. Unless expressly indicated, the samples received have been freely chosen and sent by the applicant.
- e. Test samples shall be stored at LEITAT for one month from the date of issuance of the report, unless legal and/or regulatory specifications indicate a different period, or unless express instructions are received from the applicant indicating otherwise.
- f. All claims on tested samples must be made within the storage period of the tested samples and the Laboratory shall not be held responsible if the applicant fails to do so.
- g. CONFIDENTIAL DOCUMENT: According to the terms agreed in the contractual document. The contents of this report may not be reproduced in whole or in part, modified, or used for publicity purposes without the written approval of LEITAT.
- h. This Laboratory shall not be liable in any way for the interpretation and/or misuse of this document.
- i. When the Laboratory issues a conformity statement with specification or accredited standard according to ISO/IEC 17025, the decision rule taken does not consider the test uncertainty. It is based on simple acceptance with false acceptance or rejection risk for the results within the tolerance limits up to 50%, except for those cases in which the customer, the rules or the regulatory documents prescribe a different decision rule.
- j. When the Laboratory issues a results classification with accredited standard according to ISO/IEC 17025 does not consider the test uncertainty, except when is required by standard.
- k. The uncertainties stated in the report correspond to the expanded uncertainty, obtained by multiplying the standard measurement uncertainty by the coverage factor $k = 2$ for a normal distribution, with a coverage probability of approximately 95 %. Where these are not stated, the uncertainties associated with the test results are available to the customer on request.

**TEXTILES AND TEXTILE PRODUCTS. FIRE BEHAVIOUR. CURTAINS AND
DRAPERIES. CLASSIFICATION SCHEME**

The material intended to be used in/as hanging textile elements, such as
curtains, drapes, etc., referenced as:

PALOMA/PEGASO/PESCI/PORTO

Submitted by:

INDETEX NV
Rue du Mont-Gallois, 58
B-7700 – Mouscron
Belgium

It has been tested at LEITAT–Technological Center (report **IN-00005/2023-1**)
according to **EN 1101:1995/A1:2005** and **EN 13772:2011**.

The classification according to the requirements of the standard
EN-13773:2003 is:

CLASS 1

Terrassa, February 02nd, 2023



Albert Briz
Technical Manager – Materials Area

LEITAT

Acondicionamiento Tarrasense

Tel. +34 93 788 23 00

www.leitat.org

info@leitat.org



Terrassa

C/ de la Innovació, 2
08225 Terrassa (Barcelona)

Barcelona 22@

C/ de Pallars, 179 – 185
08005 Barcelona

Parc Científic de Barcelona

C/ de Baldiri Reixach, 15
08028 Barcelona

Vall d'Hebron Institut de Recerca

Edificio Mediterránea. Hospital Vall d'Hebron
Passeig de la Vall d'Hebron, 119 – 129
08035 Barcelona

Vilanova del Camí

Centre d'Innovació Anoia
C/ dels Impressors, 12
08788 Vilanova del Camí (Barcelona)

Biopolo La Fe

Hospital La Fe, Torre A, Planta Baja
Avda. Fernando Abril Martorell, 106
46026 Valencia